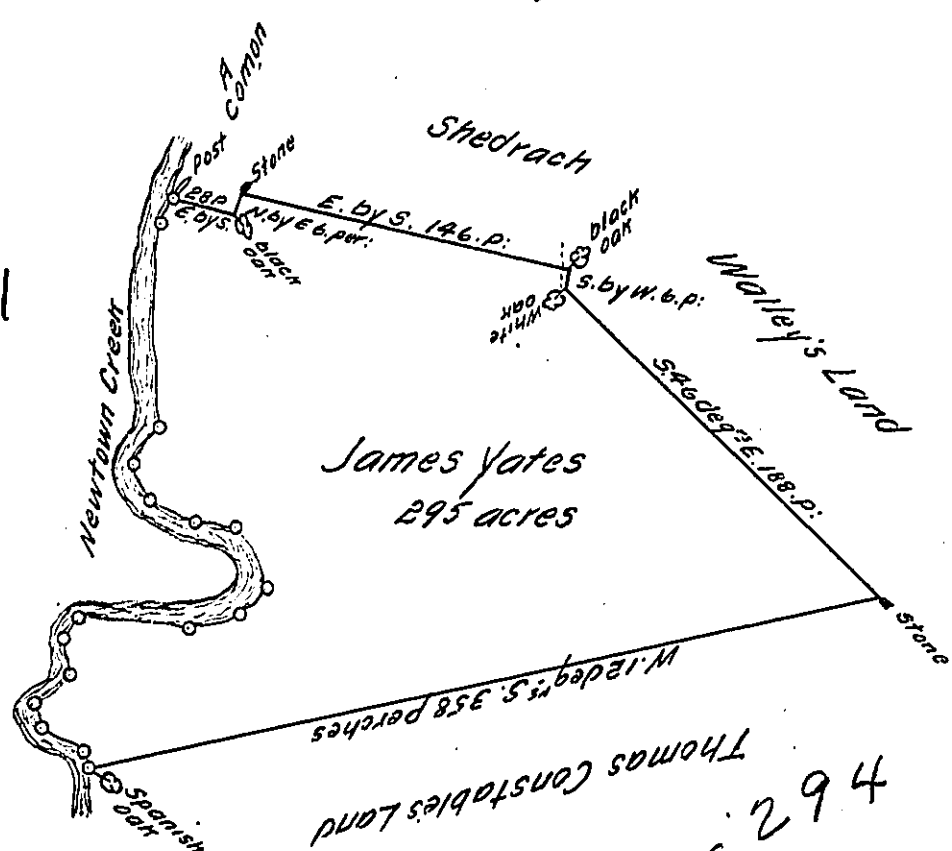


B-22-5

12	N 23 E
85	NORTH
20	N 34 E
14	N. N. W.
22	N. 59 W.
16	W. 5 N.
29	N. 25 N.
15	N. 53 E.
20	E. 16 N.
28	E. 25.
8	N. 30 E.
13	N. 10 W.
22	N. 52 E.
9	N. 20 W.
22	N. 57 W.
6	N. 10 W.
	Courses Dist

181



89-D - 294

Courses of the Creek upward

By virtue of a Gen<sup>l</sup> Warr<sup>t</sup> from the Proprietaries  
 Comm<sup>rs</sup> to me directed bearing date the 5<sup>th</sup> of the 11<sup>th</sup> month 1702 to Resurvey  
 all such Tracts & parcels of Land within the County of Bucks as may be  
 reasonably suspected to have been ~~been~~ unduely surveyed when first  
 taken up, & have not been rectified: Resurveyed unto James Yates a Tract  
 of Land lying in Newtown in the said County, bought of Israel Taylor for  
 250 acres, out of which is sold to Shedrach Walley 23 acres; The remaining part  
 Beginning at a Post by the Creek, Thence by the end of the Common E by S. 28 per. to a  
 black oak, Then N. by E. 6 per. to a stone at Shedrach Walley's Corner, Then by the S<sup>d</sup>  
 Walley's land E by S. 146 p. & 4 per. for a Road to a black oak, Then S by W. 6 p. to a white  
 oak, Then S 46 deg<sup>s</sup> E. 188 p. to a stone, Then by Thomas Constable's line W. 12 deg<sup>s</sup> S.  
 358 per. to a spanish oak by the S<sup>d</sup> Creek, Then up the several Courses thereof to  
 the place of beginning, Containing 295 acres, Resurveyed the 3<sup>d</sup> day of the 2<sup>d</sup>  
 month 1703

By me John Cutler

IN TESTIMONY that the above is a copy of the original remaining on file in  
 the Department of Internal Affairs of Pennsylvania, made  
 conformably to an Act of Assembly approved the 16th day of  
 February, 1833, I have hereunto set my Hand and caused  
 the Seal of said Department to be affixed at Harrisburg,  
 this Second day of August 1909

Henry Howers  
 Secretary of Internal Affairs.